

CLASSROOM THEMES FOR DECEMBER

WIND & WEATHER

•
REVIEW WEEK
•

Winter Break

Riverton Head Start
will be closed from
December 24th
through January 4th
for Winter Break.
Class will begin
again on January 7th.



Riverton HEAD START

DECEMBER NEWSLETTER

Health

Please remember to follow the Sick Child Guide in your parent handbook! If your child is sick and has had vomiting, diarrhea, or a fever then they must remain out of the center for a full 24 hours since their last symptom. This helps to reduce the spread of sickness and keeps our kiddos and their families healthy!



*Family Well-Being

CENTER STAFF

JEN SMITH
TEACHER & CENTER
SUPERVISOR

ANDRIA & JANET
TEACHER AIDE

SHERI
COOK

DORIE WOODWARD
REGIONAL
COORDINATOR



Winter Coats & Boots

Winter has arrived! If your child is in need of a winter coat or boots, please let us know! We would be happy to assist you in getting the appropriate winter gear for your kiddos!

*Family Well-Being

Home Learning Logs

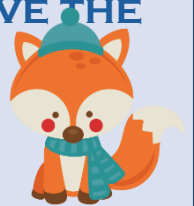
Thank you to all of the parents who have returned the Home Learning Logs! Home Learning Logs are sent out weekly and give your child an opportunity to learn even more at home! When they are filled out and returned, they also count towards our in-kind to meet our organization's grant requirements! If you have logs from a previous week, you can still fill them out and return them – they still count towards in-kind!

*Families as Lifelong Educators

ICE CREAM SOCIAL

WE ARE HAVING OUR ICE CREAM SOCIAL ON WEDNESDAY DECEMBER 12TH FROM 6 PM – 7 PM AT THE RIVERTON LIBRARY. PLEASE COME JOIN US FOR SOME ICE CREAM AND TALKING ABOUT HOW THINGS ARE GOING SO FAR THIS YEAR. WE WILL HAVE ICE CREAM, AND TOPPINGS FOR YOU TO MAKE IT HOW YOU WOULD LIKE. HOPE TO SEE YOU ALL THERE.

ALSO A REMINDER THAT ALL OF THE EVENTS WE PUT ON THE CALENDAR FOR YOU GUYS TO ATTEND COUNTS AS IN-KIND FOR US. SO PLEASE TRY TO MAKE THOSE EVENTS IF YOU HAVE THE TIME.



RECRUITMENT

WE ARE CURRENTLY RECRUITING FOR ALL CENTERS IN THE REGION! PLEASE HELP SPREAD THE WORD AND RECOMMEND OUR PROGRAM TO FAMILY AND FRIENDS!



“Children learn as they **play**. Most importantly in play, children learn how to learn.”



–O. Fred Donaldson

Play is an important part of your child's education! **Play** allows children to use their creativity while also developing their imagination, fine motor skills, and gross motor skills. It also allows them to develop physical, cognitive, and emotional strength. **Play** helps promote healthy brain development as well! Through **play**, children learn to engage and interact with the world around them!

*Families as Learners

ABSAROKA HEAD START – RIVERTON

**CLASS TIMES:
MONDAY – THURSDAY
8 AM TO 12 PM
307-856-5078**

WWW.ABSHS.ORG

FACEBOOK: ABSAROKA HEAD START - RIVERTON

ABSAROKA, INC. HEAD START IN AN EQUAL OPPORTUNITY EMPLOYER.