

CLASSROOM THEMES FOR DECEMBER

WIND & WEATHER

•
KINDNESS
•

Winter Break

Sheridan Head Start will be closed from December 22 through January 6 for Winter Break. Class will begin again on January 7.

Sheridan
HEAD
START
DECEMBER
NEWSLETTER

Health

Please remember to follow the Sick Child Guide in your parent handbook! If your child is sick and has had vomiting, diarrhea, or a fever then they must remain out of the center for a full 24 hours since their last symptom. This helps to reduce the spread of sickness and keeps our kiddos and their families healthy!



*Family Well-Being

CENTER STAFF

MISS TANYA
TEACHER

MISS AMY
TEACHER AIDE

MISS MONICA
CENTER
SUPERVISOR

SALLIE WRIGHT
REGIONAL
COORDINATOR



Winter Coats & Boots

Winter has arrived! If your child is in need of a winter coat or boots, please let us know! We would be happy to assist you in getting the appropriate winter gear for your kiddos!

*Family Well-Being



Home Learning Logs

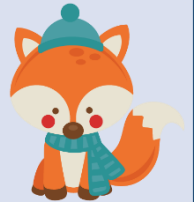
Thank you to all of the parents who have returned the Home Learning Logs! Home Learning Logs are sent out weekly and give your child an opportunity to learn even more at home! When they are filled out and returned, they also count towards our in-kind to meet our organization's grant requirements! If you have logs from a previous week, you can still fill them out and return them – they still count towards in-kind!

*Families as Lifelong Educators

FROM THE TEACHERS:

THANK YOU FOR YOUR COOPERATION WITH OUR PARENT TEACHER CONFERENCES. WE ENJOYED OUR TIME TALKING TO EACH FAMILY ABOUT HOW WELL THEIR CHILD IS DOING AT HEAD START.

PARENT ACTIVITY *NEXT* FRIDAY – DECEMBER 14, 2018 AT THE ICE RINK – OPEN SKATE 7:00 – 8:30PM.



RECRUITMENT

WE ARE CURRENTLY RECRUITING FOR ALL CENTERS IN THE REGION! PLEASE HELP SPREAD THE WORD AND RECOMMEND OUR PROGRAM TO FAMILY AND FRIENDS!



“Children learn as they **play**. Most importantly in play, children learn how to learn.”



–O. Fred Donaldson

Play is an important part of your child's education! **Play** allows children to use their creativity while also developing their imagination, fine motor skills, and gross motor skills. It also allows them to develop physical, cognitive, and emotional strength. **Play** helps promote healthy brain development as well! Through **play**, children learn to engage and interact with the world around them!

*Families as Learners

ABSAROKA HEAD START – SHERIDAN

CLASS TIMES:

MONDAY – THURSDAY

8:00AM TO 12:00 PM

307-673-2637

WWW.ABSHS.ORG

FACEBOOK: ABSAROKA HEAD START - SHERIDAN

ABSAROKA, INC. HEAD START IN AN EQUAL OPPORTUNITY EMPLOYER.